

*Specialty Systems*

# *SpecSys*

*Engineering and Manufacturing*

An ISO 9001:2015 Certified Company

## *Mission Statement:*

A full service provider of project management, engineering and manufacturing for fast track projects, systems and products.

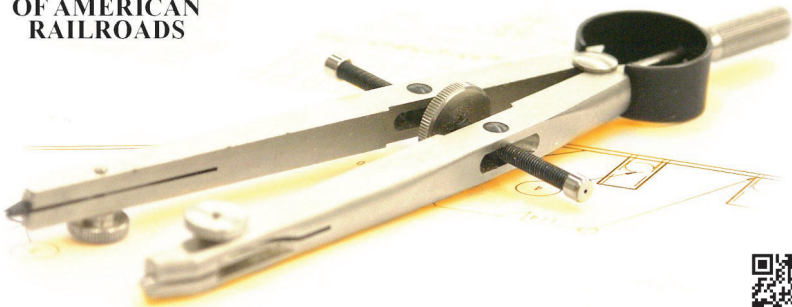


## *Vision Statement:*

Embrace those who respect, honor, and value relationships.



ASSOCIATION  
OF AMERICAN  
RAILROADS



# SpecSys, Inc.



Montevideo, MN



Plymouth, MN



Granite Falls, MN



New Ulm, MN



Prentice, WI





**RITALKA, INC.**

**Montevideo, MN**

121 North 1st Street 56265

PH 320-269-3227

**Plymouth, MN**

3535 Plymouth Blvd, Unit 211  
55447

**Granite Falls, MN**

1123 Hwy 212 W 56241

**New Ulm, MN**

2120 Broadway Street North 56073

**Prentice, WI**

474 Birch Street 54556

**SpecSys, Inc.**



# CAPABILITY STATEMENT

**SpecSys provides solutions for large, complex machinery & equipment projects.**

## CORE COMPETENCIES

### Engineering

Exceeding 5,000 hours per month providing Design, Analysis, Systems, Control, Test, and Technical Publications services.

### Manufacturing

Exceeding 30,000 hours per month of Machining, Fabrication, Weld, Assembly, Paint and Testing production.

## DIFFERENTIATORS

- One source, complete in-house turn key services
- Provider of fast track projects, systems, and products
- Custom services for client's needs
- Flexibility to offer full engineering and/or manufacturing and/or testing service
- Engineering staff includes B.S. Engineers and A.S. Designers
- Facilities, systems and processes allow for multiple projects simultaneously

## PAST PERFORMANCE

- Eighteen years of proven solutions for clients
- Large, complex industrial equipment designs and builds
- Commonly add capacity and capability to our customer's portfolios
- Provide services related to Government Contracts as a subcontractor
- Quality assurance driven by Process Assurance Checks (PAC)
- Project library containing info-data for historic reference

DUNS Code: 041665048

CAGE Code: 34PZ9

NAICS Codes:

Section 221: Utilities

221122: Electric Power Distribution

Section 332: Fabricated Metal Products Mfg.

332312: Fabricated Structural Metal Mfg.

332313: Plate Work Mfg.

332322: Sheet Metal Work Mfg.

332420: Metal Tank (Heavy Gauge) Mfg.

332439: Other Metal Container Mfg.

332710: Machine Shops Mfg.

332721: Precision Turned Production Mfg.

332999: All Other Misc. Fab Metal Product Mfg.

Section 333: Machinery Mfg.

333111: Farm Mach. Mfg.

333120: Construction Mach. & Equip. Mfg.

333131: Mining Mach. & Equip. Mfg.

333132: Oil & Gas Field Mach. & Equip. Mfg.

333519: Rolling Mill & Other Metalworking Equip. Mfg.

333911: Pump & Pumping Equip. Mfg.

333922: Welding & Soldering Equip. Mfg.

333924: Industrial Truck, Tractor, Trailer & Stacker Mach. & Equip. Mfg.

333999: All Other Misc. General Purpose Mach. Mfg.

Section 336: Transportation Equip. Mfg.

336112: Light Truck & Utility Vehicle Mfg.

336212: Truck Trailer Mfg.

336510: Railroad Rolling Stock Mfg.

336992: Military Armored Vehicle, Tank and Tank Component Mfg.

336999: All other Transportation Equip. Mfg.

Section 541: Professional, Scientific & Technical

541330: Engineering Services

541340: Drafting Services

541380: Testing Laboratories

541712: R&D in the Physical, Engineering, & Life Science

Section 811: Repair & Maintenance

811310: Commercial & Industrial Mach. & Equip.

## Qualifications/Awards

- ISO 9001:2015 Certified Company
- AWS Certified Weld Inspector on Staff
- 2005 SW MN Entrepreneurial Business of the Year
- Governor's Certificate of Commendation

**We don't just say we can do it, We have done it!**



# Specs'ys, Inc.



## Clientele

Use of Logo does not  
infer partnership



**McELROY**

**LeeBoy**

**FIMCO**  
INDUSTRIES



**FRANK'S**  
INTERNATIONAL

**ZI** Concrete  
Mixing Equipment  
**Zimmerman  
Industries, Inc.**

 **CAVOTEC**

**Despatch**  
Thermal Processing Technology **ITW EAE**

**SUPERIOR**



 **CAMERON**

 **Holland**

**P&H**



**TEREX**

**RAVEN**

 **TERRASONIC**  
INTERNATIONAL

**CDE**

**CANRIG**  
DRILLING TECHNOLOGY LTD.



**HERZOG**



**LEE.C MOORE**

 **TENNANT**

 **TESMEC**



**Ditch  
Witch**

 **Atec**

**Nordco**



**Rj Corman**  
Railroad Company



**HARSCO**  
RAIL

**GEHL**

 **INTEGRAL**  
OILFIELD SOLUTIONS

 **marcus**  
construction

 **Manitowoc**

**Great Plains**

**HAGIE**

 **ag-chem**

 **metso**

 **LORAM**



 **WORTHINGTON**  
INDUSTRIES

**HALLIBURTON**

**Int'l  
Specs, Inc.**

**Clientele**

Use of Logo does not  
infer partnership

# Agricultural







 **DURATECH**<sup>®</sup>  
INDUSTRIES



 **AGCO**  
Your Agriculture Company

**Agricultural**

# Agricultural



**CNI**  
INDUSTRIAL



Tyler Industries

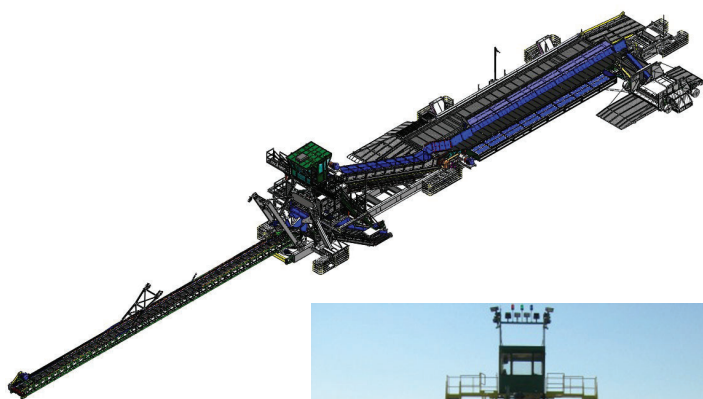


**ROTO-MIX**

**Agricultural**



# Agricultural





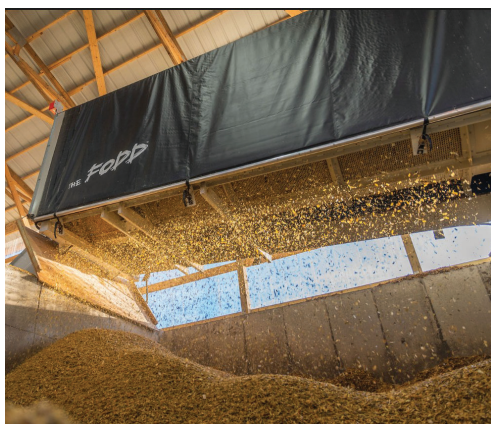
Agricultural



# Agricultural







THE FODD

Agricultural

# Aviation





Aviation



# Construction

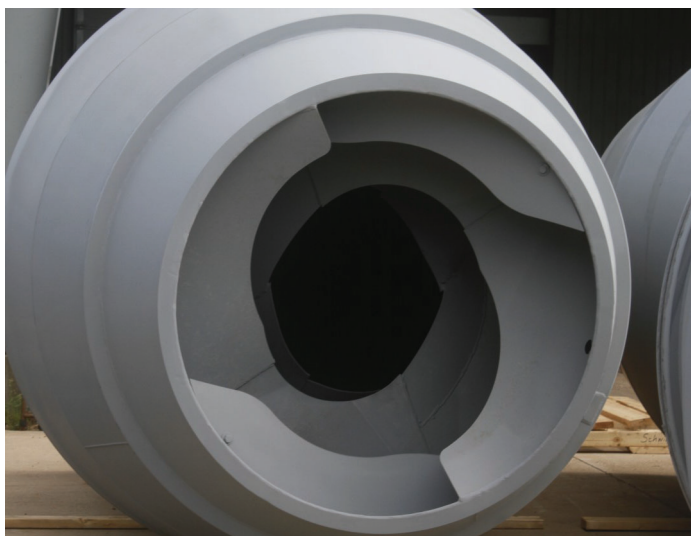




Construction



# Construction





# Construction



**Ditch  
Witch®**

# Construction



**SCHWING**  
**AMERICA INC.**





Construction



# Construction





**TEREX**



**TEREX**  
Cranes

**Construction**



# Construction







**Indy**  
EQUIPMENT

**Construction**

# Construction



Western Geophysical



Towcat





Industrial



# Industrial

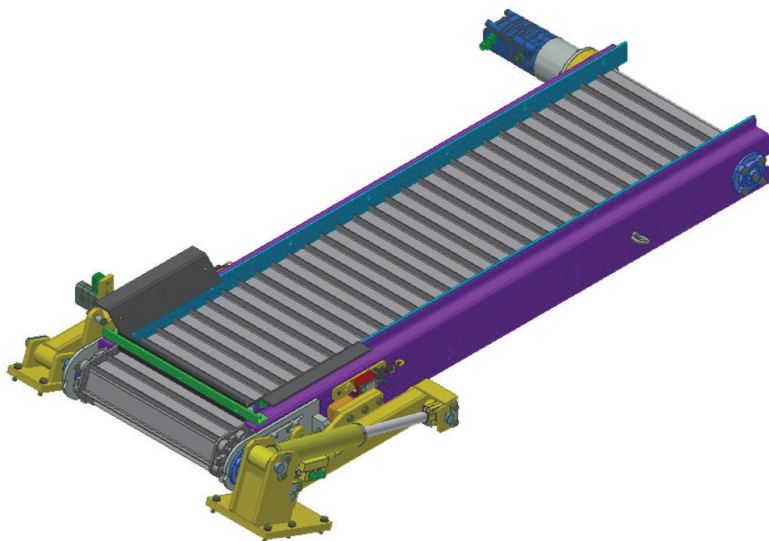


1-800-  
**PACK-RAT**   
*Moving & Storage Made Simple*

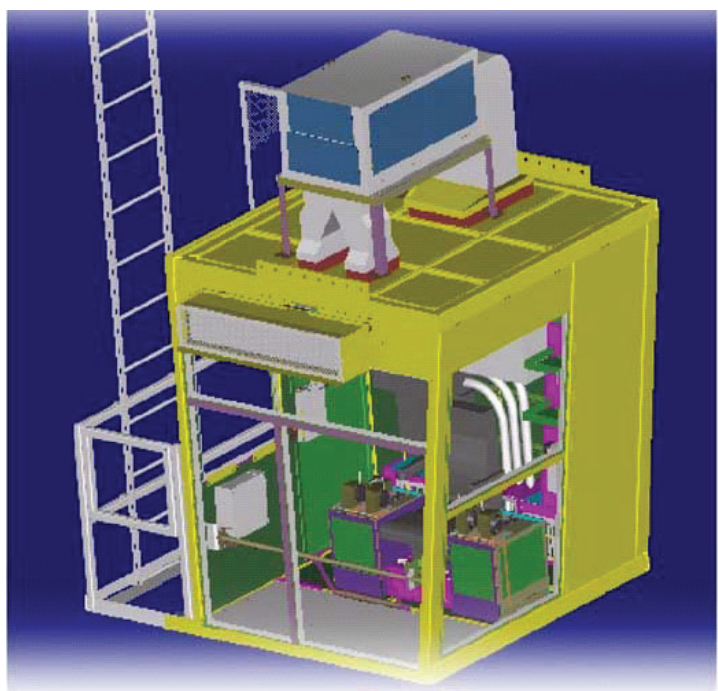


Industrial

# Industrial

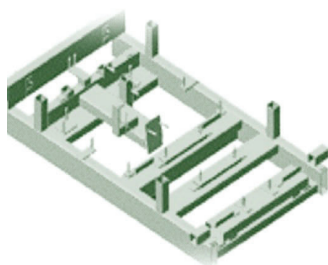






Industrial

# Industrial



**RJSCD**  
*A LeBay Company*



**SL-MTI**®



**ALAMO**  
INDUSTRIAL

Industrial



# Industrial





**TEREX**

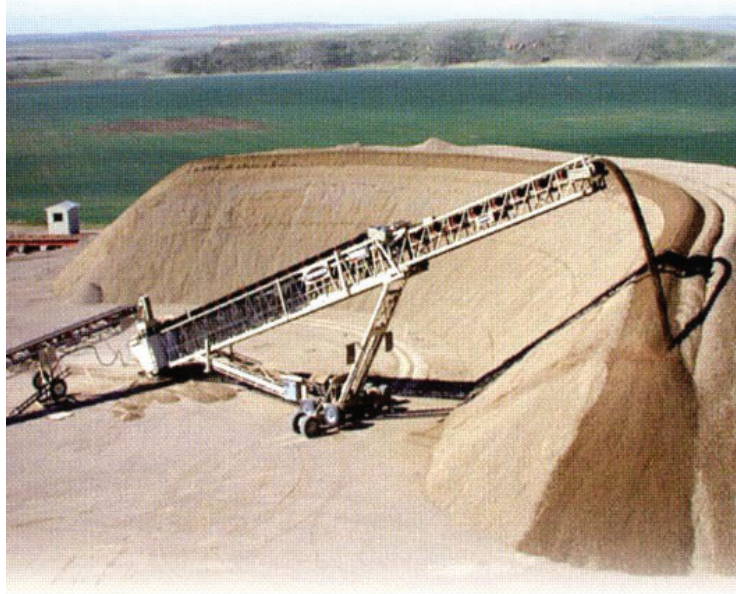
**Industrial**

# Material Handling



**CDE**





**Material Handling**

# Material Handling



 **McLanahan**



 **SUPERIOR**

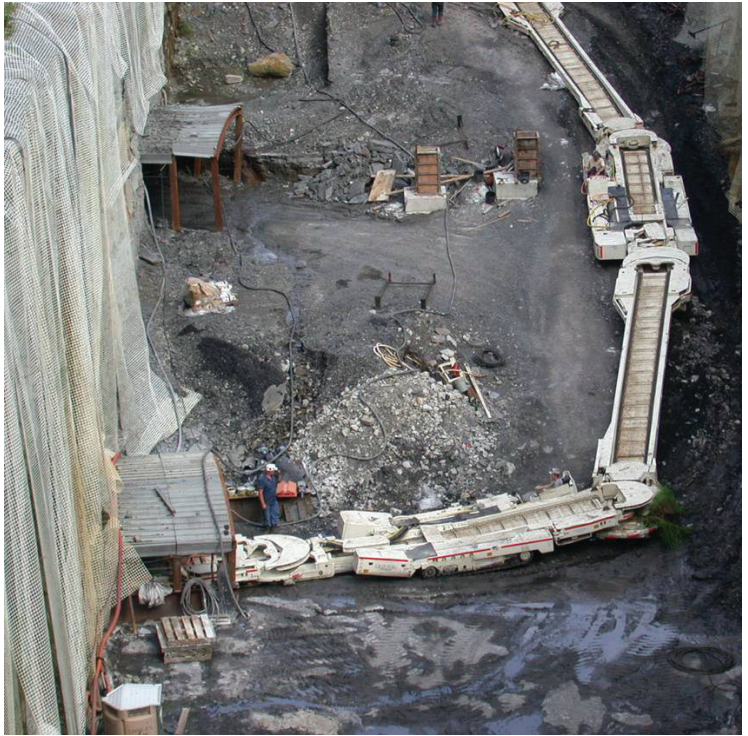




Material Handling



# Mining



OLDENBURG GROUP  
INCORPORATED



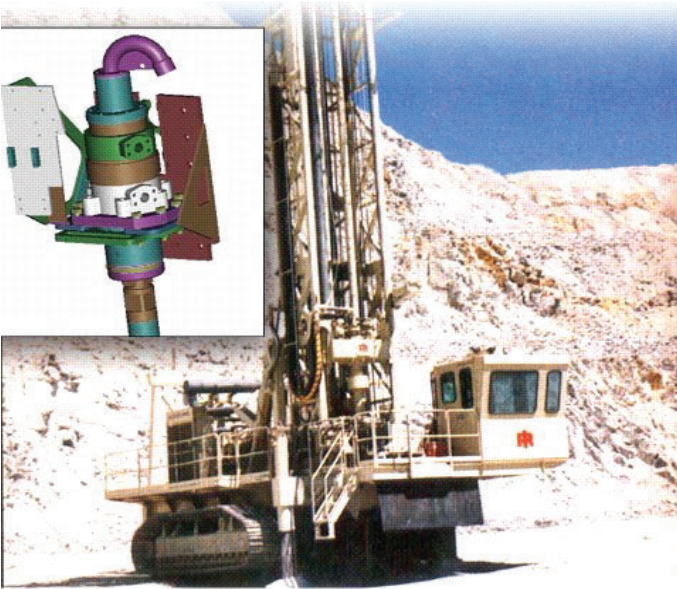
Minning



# Mining







Mining

# Mining



**KOMATSU**





 **LEECMOORE**

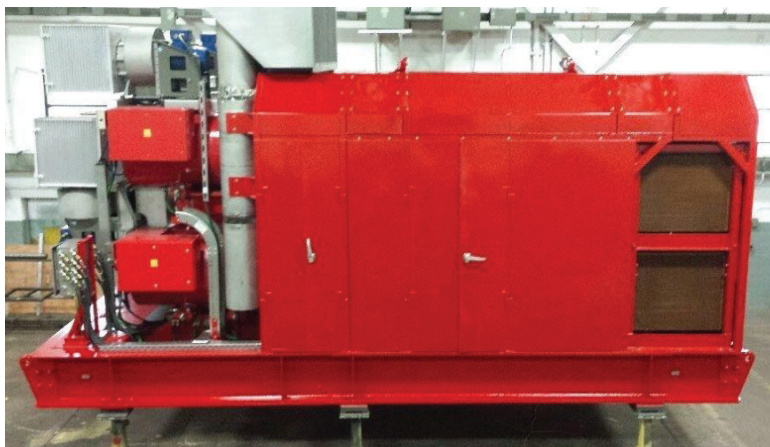


 **BOART  
LONGYEAR**

**Oil/Energy**



# Oil/Energy





**CANRIG**  
DRILLING TECHNOLOGY LTD.

Oil/Energy

# Oil/Energy







Oil/Energy

# Railroad



**LORAM**  <sup>®</sup>  
SPEED PERFORMANCE RELIABILITY



**LORAM**  <sup>®</sup>  
SPEED PERFORMANCE RELIABILITY

Railroad



# Railroad





**Railroad**



# Railroad



**GREX**





Railroad

# Railroad



**GREX**



**GREX**

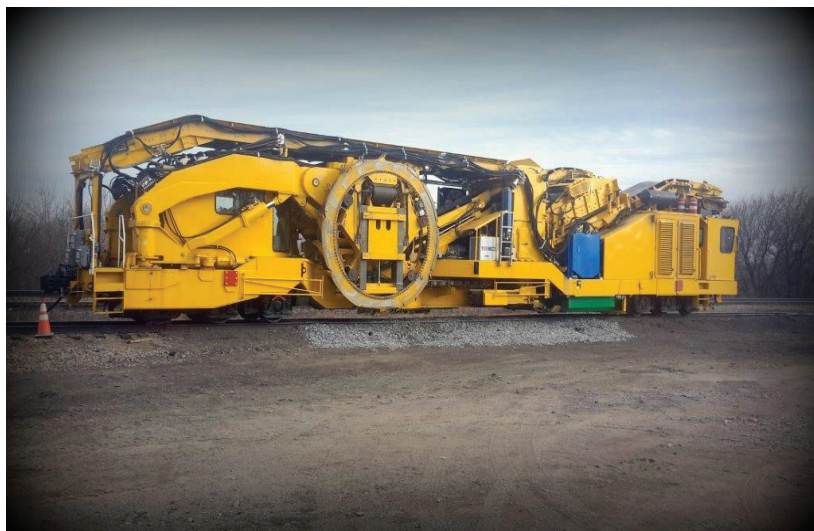
**Railroad**



# Railroad



**HARSCO**  
RAIL



# Railroad

**HARSCO**  
RAIL



# Railroad



**HARSCO**  
RAIL





Railroad

**HARSCO**  
RAIL

# Railroad





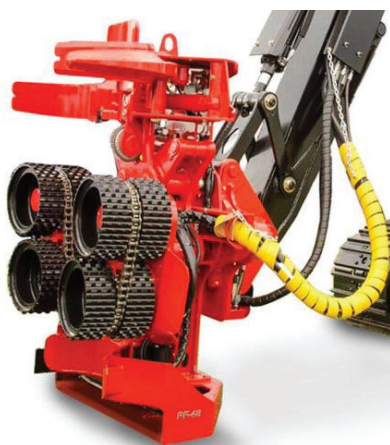
# Railroad





# Forestry





Forestry

# Forestry







**TEREX**

**Miscellaneous**

# Miscellaneous



**Atec**



**Despatch**

Thermal Processing Technology

**ITW EAE**

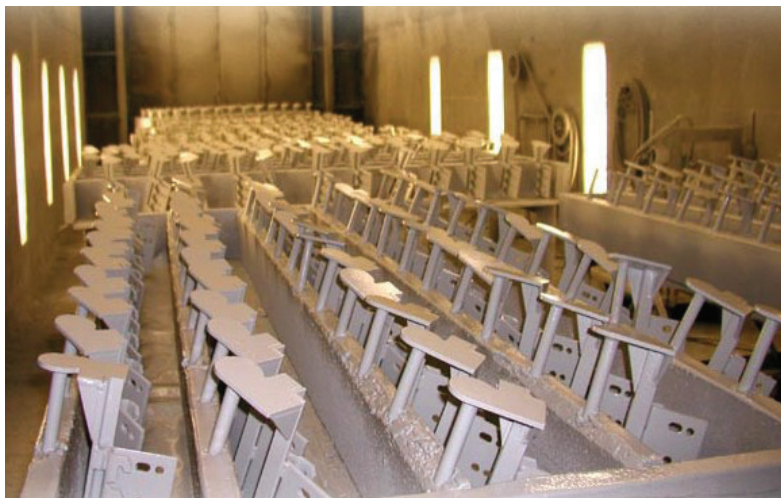
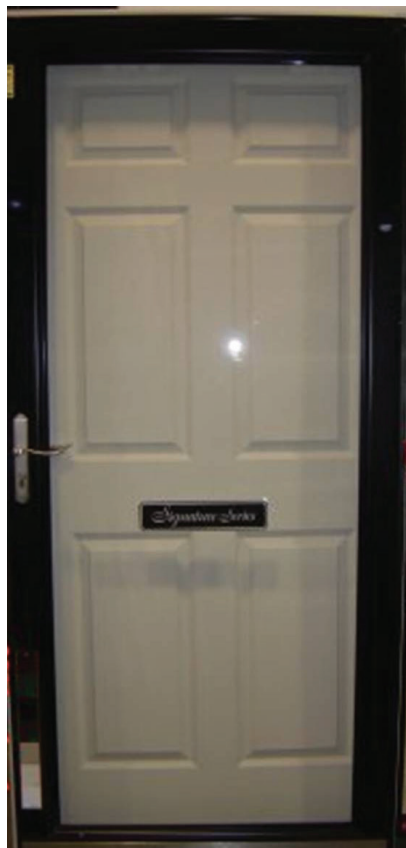


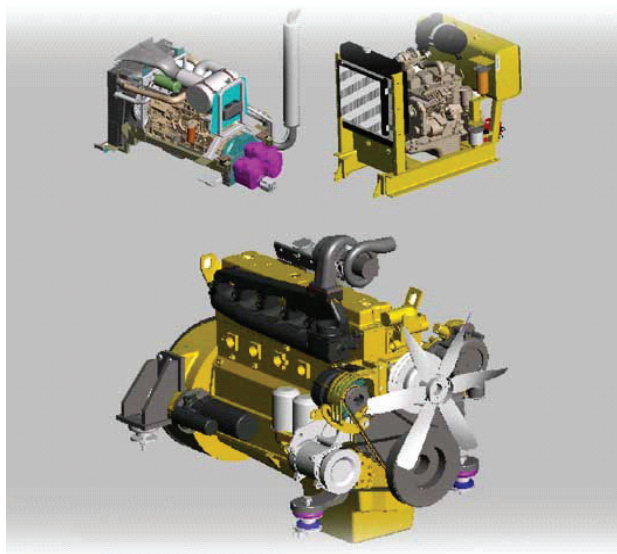


Miscellaneous



# Miscellaneous





 **Perkins**  
Engines

**CAT**<sup>®</sup>

Miscellaneous

# Miscellaneous



**TORO.**





ROPS & Operator

Miscellaneous

# Miscellaneous







# Miscellaneous



## *Design*

*Project Management  
Systems Engineering  
CAD Development  
Leverage  
Fast Track*

## *Analysis*

*Linear FEA  
Non-Linear FEA  
CFD  
Simulation  
Feasibility*

## *Systems*

*Hydraulic  
Pneumatic  
Electrical  
Mechanical  
Complete Solutions*

## *Controls*

*PLC & HMI  
PI&D  
Automation  
I/O-A/D  
System Design  
Integration*

## *Test*

*Quantify (or) Reliability  
Test Plan  
Test Prep  
Test  
Test Report*

## *Tech Pubs*

*Manuals  
Audits  
Collateral  
eSolutions  
Training*



# *SpecSys6*



[www.specsys6.com](http://www.specsys6.com)

## *SpecSys 6 is doing it!*

Design

Analysis

Systems

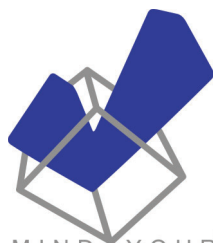
Control

Test

Tech Pubs



SpecSys6



CMW

INDUSTRIAL PROPERTIES, LLC

FITNESS

CMW

RETAIL PROPERTIES, LLC

CMW

WISCONSIN, LLC

Wald Holdings

“Others will tell  
you they could do  
it (complex  
projects). We are  
already doing it,  
each and every  
day.”

Phone: 320-269-3227  
[www.specsys.com](http://www.specsys.com)  
[www.specsys6.com](http://www.specsys6.com)

